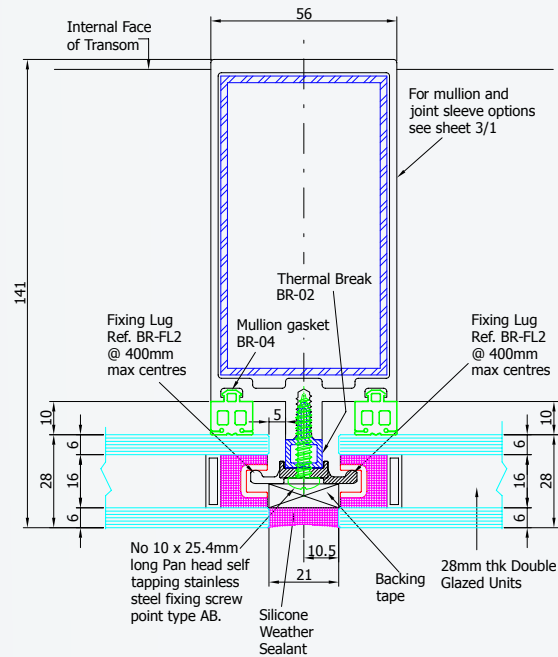
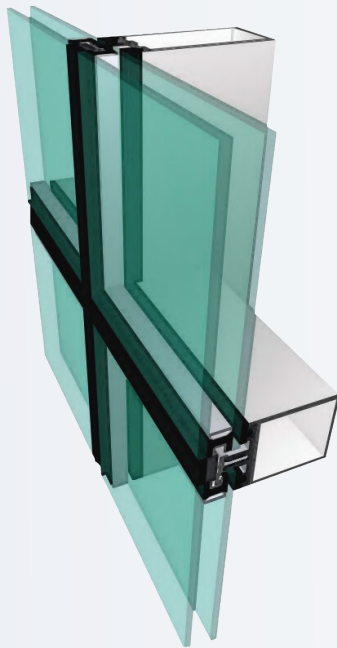


# SG-4-56-FF

## 4 Sided Frameless Structurally Glazed Curtain Walling System

The system currently offers frames of 24mm, 28mm or 32mm double glazed top hung casement. Fixed double glazing incorporates flush edged double glazing units whilst the top hung windows utilise double glazing units that have stepped edges to enable clean and continuous sight lines whilst providing high levels of performance. All double glazed units **MUST** be dual sealed with a P.I.B. primary seal and a silicone secondary seal suitable for units being placed in SSG applications.



### SG-4-56-FF

#### System Performance



SIZE

- Profile width only 56mm.
- Profile depths from 43mm to 200mm.



DESIGN

- Designed specifically for the GCC & Pakistan climate.
- Designed to perform at windloads in excess of 3.5 kPa.
- Designed to meet the CWCT standards so meets BS:EN, ASTM, AAMA specifications.



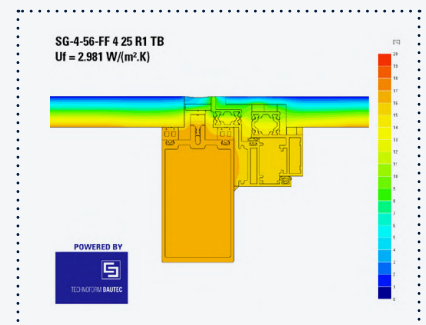
PERFORMANCE

- Thermal performance can achieve Ucw of 1.6 W/m<sup>2</sup>/K.



INSTALLATION

- Glass panels mechanically fixed so do not require any structural bonding.
- Thermal Break frameless outward opening vent panels can be incorporated.
- Neat fully sealed weather seal joints.



*Isotherm Diagram*

DISCOVER  
MORE ON OUR  
WEBSITE

