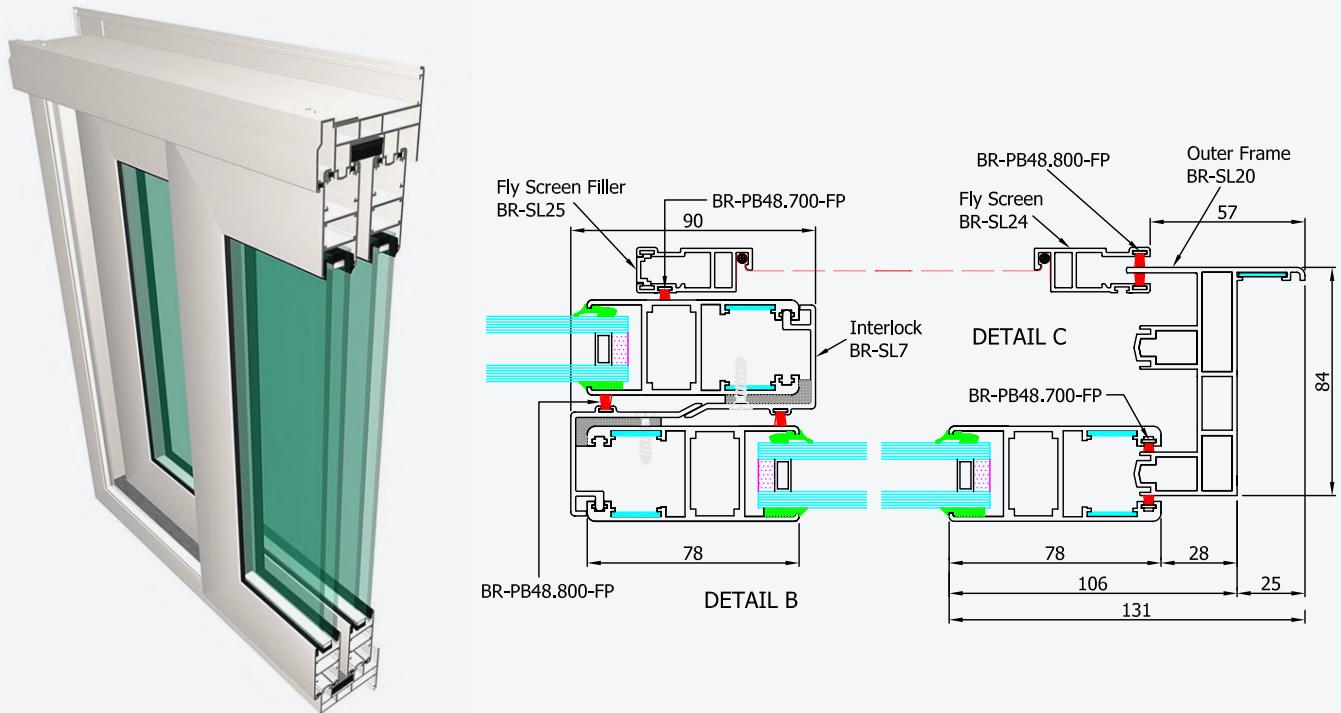


# NTB-84-SLIDE

## Slide horizontal sliding window system (thermally broken)

The system is designed to accommodate 24mm double glazed units, using non beaded or beaded sash and standard clip in glazing beads to fixed light windows. As with all **Jalal** systems, the horizontal sliding/fixed light window system is manufactured to exacting standards, enabling economy to be combined with strength to give many years of aesthetic, trouble-free operation.



## NTB-84-SLIDE

### System Performance



SIZE

- Sliding panels run on stainless steel tracks for smooth operation and long service life.



DESIGN

- All frame joints are fully sealed during manufacture.
- Neat pencil rounded section edges to glazing beads and frames to provide a softer, higher quality appearance.



PERFORMANCE

- Economy is combined with strength to provide many years of trouble free operation and to be aesthetically pleasing.
- The system offers high quality thermally broken sections to suit specific project requirements and reduce heat gain.
- Designed to perform at wind resistances up to 1.5 kPa.



INSTALLATION

- Sliding panels run on stainless steel tracks for smooth operation and long service life.
- Thermal Break frameless outward opening vent panels can be incorporated.
- Neat fully sealed weather seal joints.

DISCOVER  
MORE ON OUR  
WEBSITE

