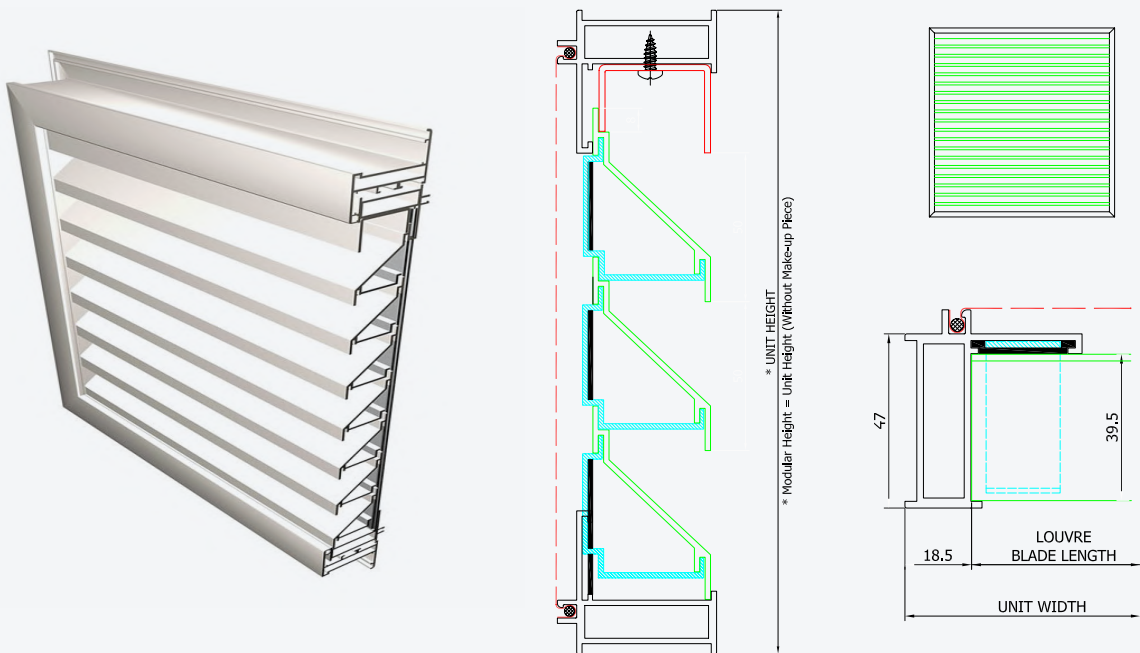


LV-2-50

Aluminium fixed louvre & door system (with insect screen)

As with all **Jalal** systems, the Louvre system is manufactured to exacting standards enabling economy to be combined with strength to give many years of aesthetic, trouble-free operation.



LV-2-50

System Performance



SIZE

- Louvre Height: 2400 mm (max)
- Louvre Width: 1200 mm (max)



DESIGN

- Designed so that the ventilation louvres can be installed directly onto the structure or incorporated into **Jalal** window and door sections.
- Manufactured to exacting standards enabling economy to be combined with strength to provide many years of trouble free operation.



PERFORMANCE

- Standard and Heavy Duty louvre blades can be used to provide numerous different ventilation performance possibilities.



INSTALLATION

- Simple and quick installation method saves time and money in fabrication.

DISCOVER
MORE ON OUR
WEBSITE

