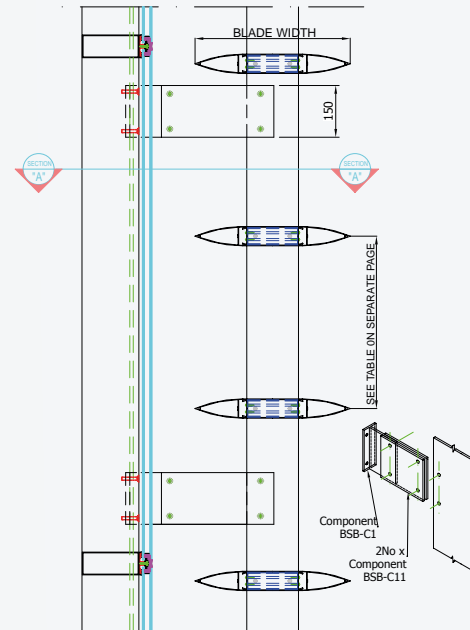
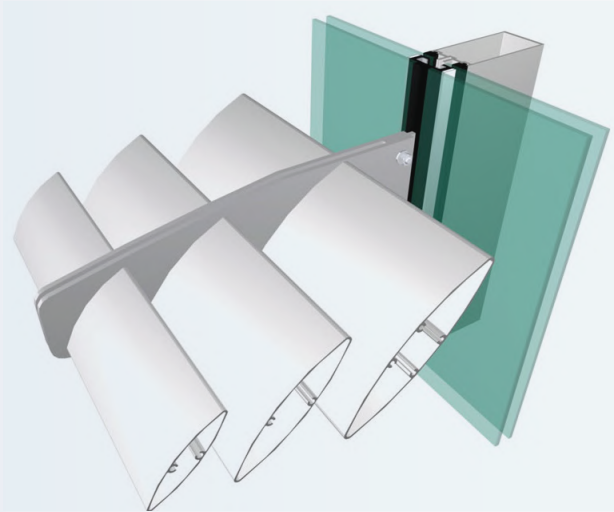


BSOL-1-56

Brise Soleil System

The system offers a number of one piece blades or can be made up of 3 pieces to form larger blades. The Brise Soleil is hung horizontally or vertically. Various other profiles can be designed and incorporated allowing architects to achieve flexible designs. In addition Jalal Systems can supply solid blades that can be fixed on cantilever fixing. As with all Jalal Systems, the Aluminium Brise Soleil System is manufactured to exacting standards enabling economy to be combined with strength to give many years of trouble free operation



BSOL-1-56

System Performance



SIZE

- The Brise Soleil system can be used for the blades up to 4.0m long.



DESIGN

- The aluminium profiles are extruded from aluminium alloy 6060 T6 complying with the recommendations of BS EN 12020-2:2008. BS EN 755-9:2008.
- Brise Soleil Blades are designed for a maximum deflection of SPAN/100 but not more than 25mm



PERFORMANCE

- The system offers high quality thermally broken sections to suit specific project requirements and reduce heat gain.
- Thermal performance can achieve U_w of 1.8 W/m²K.



INSTALLATION

- Detailed installation instructions are provided which should be strictly followed.



DISCOVER
MORE ON OUR
WEBSITE